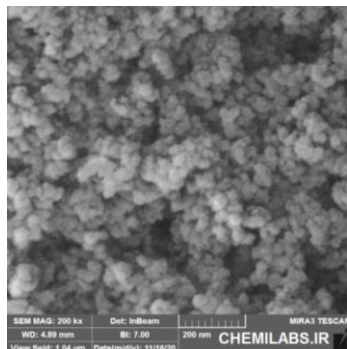


Nano Silica



Nano-SiO₂ is a white fluffy powder composed of high purity amorphous silica powder. Because of its small particle size, nano-SiO₂ had the advantages of large specific surface area, strong surface adsorption, large surface energy, high chemical purity and good dispersion.

Silicon dioxide nanoparticles, also known as silica nanoparticles or nano-silica, are the basis for a great deal of biomedical research due to their stability, low toxicity and ability to be functionalized with a range of molecules and polymers.

Properties

Form:	Ultrafine amorphous powder
Colour:	White
Odour:	Odourless
Melting Point (°C):	approx. 1700
Solubility (Water):	water soluble
Solubility (Organic solvents):	Insoluble/Slightly soluble
Specific Gravity (water =1):	2.2
Bulk density (kg/m ³) approx.:	90-110
Reflectance:	94 %
Specific surface (m ² /g):	145
Particle size, mean (μm):	average 20 nm